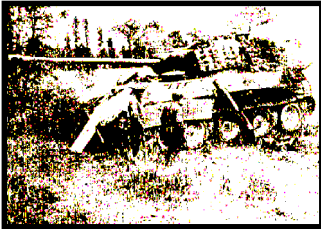


ATS AP 37 Apples to Apples ATS Conversion 03/15/2010



St. Sever Calvados, France, 4 August 1944: This scenario is a conversion to the Advanced Tobruk System (ATS) from ASL. Ownership of Advanced Tobruk and Darkest December are necessary for play as are ASL boards 44 and 54. Please refer to scenario AP37 for the historical background to this scenario as well as its aftermath. ASL design by Pete Shelling.

ATS on The Table - <http://www3.telus.net/public/larsent/>



Elements of SS Pz Reg 2 set up as noted.

Set up first on/south of hexrow Y on board 44 and/or hexrow I on board 54.

758	657	118	117	LMG MG34	LAT Psk	LAT Pf	Road Block	Fox Hole
4	4	1	2	3	2	4	1	4

Set up using Hidden setup within 6 hexes of 44K6.

ETC	Pz Vg
2	2



Elements of F Company, 67th Armored Regiment and 3rd Batt, 41st Armored Inf Reg enter on Turn 1 on between 44GG5 and 54A5.

767	656	259	565 f	118	117	MMG 1917	LMG 1919	LAT Baz	LMtr
3	5	3	1	1	2	2	3	1	1

M4A3 76W	M18	M4A3	M4 Dozer	M3	M2A1	Jeep
1	1	2	2	6	2	1

VICTORY CONDITIONS

The Americans win immediately upon amassing ≥ 135 Victory points. VPs are earned normally plus the Americans earn VP for units exited off the south edge on/between 44A5 and 54 GG5. Passengers exited are worth 1.5 times there normal value. Buildings 54U2 and 44R7 are each worth 30 VP to the American if controlled.

SPECIAL SCENARIO RULES

- Spotting conditions are Hazy.
- All Hedges are Bocage. Place overlays as follows O2 44O10/P9, Hd6 44K7/K8, Hd9 44H8/H7, Hd10 44L5/M5
- The Germans are Die Hard Waffen SS. They suffer -2 on overruns and friendly surrendered or broken enemy units in MSR have no effect.
- One American AFV may be recorded as have a Gyrostabilizer. A stabilizer provides the vehicle with a -2 mod to all HPT rolls.
- All American personnel must enter as Passengers and may not unload the Turn 2 Fire/ Movement segment.

BALANCE

- ✚ Add 1 Roadblock to the German OOB
- ☆ Delete 1 LAT Psk from the German OOB

TURN RECORD MARKER

1	2	3	4	5	6	7
---	---	---	---	---	---	---

MAP LAYOUT

