

ATS G25 The T-Patchers – ATS Conversion 01/24/2009



San Pietro, Italy, 15 December 1943: This scenario is a conversion to the Advanced Tobruk System (ATS) from ASL. Ownership of ATS Dark December is necessary for play as are ASL Boards 41 and 11. See G25 for the scenario historical background.



Elements of PG Div 29. setup first on board 41.

657	455 f	117	MMG MG34	LMG MG34	LMtr 50D	Stug IIIG L	HAT 50B	Road Block
9	2	1	1	3	1	1	1	1

Enter on Turn 5
along the north
edge of bd 41.

Stug III G L
1



Elements of 2nd Batt., 143rd Inf Reg., set up second on board 11 in hexes numbered 5 or greater.

767	259	565 f	118	117	MMG .50 cal	LMG 1919	LAT Baz	LMtr
14	3	2	1	3	1	2	2	2

Elements of Co.
A, 573rd Tank
Batt. Enter on
Turn 1 along the
south edge of
board 11

M4A1
4

VICTORY CONDITIONS

The Americans win at game end if they occupy the onboard area north of the 41R6-41T4-41W6-41X5-41EE5-41GG6 road with more Victory Points than the Germans occupying the same area, provided the Americans have not lost ≥ 55 VPs.

SPECIAL SCENARIO RULES

- Spotting conditions are Average.
- All Buildings are Masonry. The creek is dry. Place overlays X12-11DD2/EE2, X13-41DD6/EE6, X14-41EE8/FF7.
- The German Player may designate up to 3 Fortified Building Locations, **Fortified** (Provides additional +1/L to the normal terrain modifier and Friendly units cannot enter a Fortified location that is already occupied by non B/S Enemy units, even by Infiltration or via Sewer Infiltration)
- The German may place up to 4 AP Mine factors.

TURN RECORD MARKER

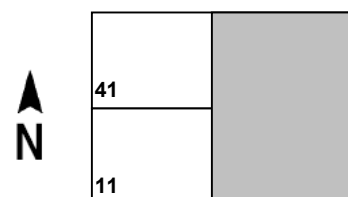
1	2	3	4	5	6	7
---	---	---	---	---	---	---

BALANCE

- ☆ Delete the German 50B HAT.
- ✚ German Turn 5 units enter on Turn 3.

MAP LAYOUT

Only hexrows R-GG are playable



ATS on The Table - <http://www3.telus.net/public/larsent/>